

USE CASE

Alberta Electric Utility Transforms Operations with Altalis Geospatial Data

AN ALBERTA-BASED electrical distribution utility, serving hundreds of thousands of customers, relies on Altalis geospatial data to effectively manage and expand its vast powerline network. The utility is committed to climate resilience, reliable power delivery, and rapid response to outages, making accurate and up-to-date geospatial information essential to its success.



CHALLENGES

*EVOLVING NEEDS AND REGULATORY PRESSURES DEMAND
COMPREHENSIVE DATA SOLUTIONS*

GIS SYSTEM MODERNIZATION

The organization embarked on a major initiative to replace its legacy GIS system with a modernized utility network. This complex undertaking required a comprehensive and accurate spatial data foundation to support the new system and its advanced capabilities.

MEETING INCREASING REGULATORY PRESSURE

The company faced growing internal and external demands for robust data analytics and reporting. Regulatory requirements, stakeholder requests, and the need for more informed decision-making necessitated access to a wider range of spatial data.

DATA GAPS AND ACCESSIBILITY

Challenges were encountered when accessing critical datasets, particularly those related to other utility infrastructure, such as gas pipelines and telecommunications cables. Data fragmentation and inconsistent availability hindered their ability to gain a complete picture of underground assets.

"I would say for the most part, whenever I have questions or I'm looking for data, Altalis is certainly my #1 go to."

**-MANAGER, DATA INTEGRITY & GIS,
POWER UTILITY COMPANY**

SOLUTIONS

ALTALIS GEOSPATIAL DATA SUITE

CENTRALIZED & COMPREHENSIVE DATASET

The utility leverages multiple Altalis subscriptions to access a centralized dataset including:

CADASTRAL DATA Provides detailed information on property boundaries and utility right-of-ways.

ENHANCED TITLE MAPPING (ETM) Defines ownership parcel boundaries with extensive attribution including landowner information.

DISPOSITION (DIDS+) MAPPING Offers insights into land use and potential conflicts with other infrastructure on public lands.

GDM PIPELINE DATA Identifies and analyzes pipeline infrastructure in relation to powerlines.

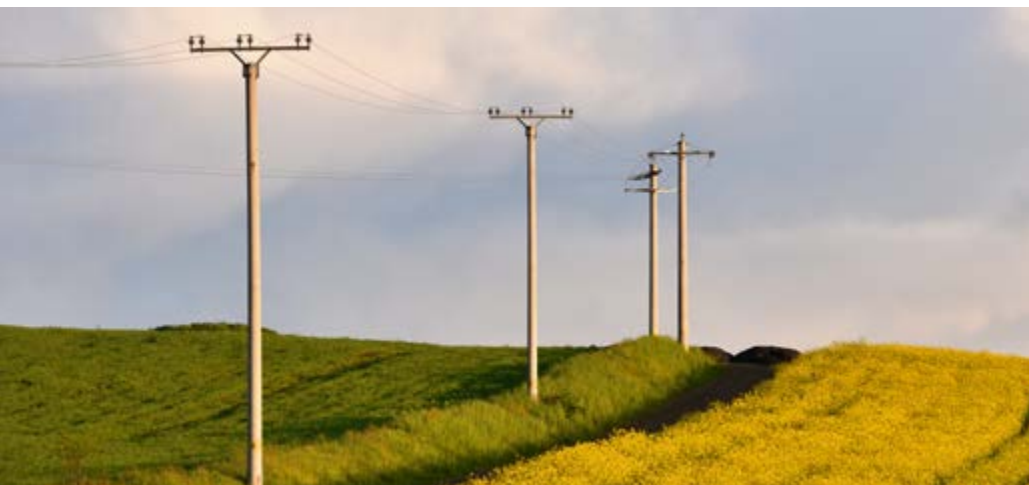


INTERNAL APPLICATION DEVELOPMENT

Altalis data is integrated into the utility's GIS systems and enhanced through internal web mapping applications. This provides real-time access to critical information and empowers teams to proactively identify potential challenges in approvals or construction.

COLLABORATIVE DATA ACQUISITION

Altalis collaborates closely with the utility to provide specific datasets, ensuring they have the most relevant and up-to-date information for project planning and execution.



RESULTS

- ✓ Streamlined Operations
- ✓ Data-driven decision making

THE INTEGRATION OF ALTALIS GEOSPATIAL DATA HAS YIELDED SIGNIFICANT BENEFITS FOR THE ELECTRIC UTILITY:

IMPROVED DECISION-MAKING

Access to comprehensive and accurate data enables faster and more efficient decision-making for new customer requests and infrastructure projects.

ENHANCED OPERATIONAL CAPABILITIES

Proactive identification of potential challenges leads to streamlined project execution and improved operational efficiency.

STRATEGIC DATA MANAGEMENT

The use of Altalis data and robust GIS systems has become integral to the utility's operations, supporting growth and ensuring compliance while meeting customer needs.

REAL-TIME INSIGHTS

Internal applications built on Altalis data provide real-time access to critical information, facilitating informed decision-making and proactive issue resolution.

ABOUT ALTALIS

(403) 716-3490

info@altalis.com

www.altalis.com

Established in 1998, we have been the **authoritative source of spatial data and imagery in Alberta for over 25 years**. We are the leading data management, maintenance, and distribution company in Alberta, and ensure the continued updating, re-engineering, storage, distribution, value-added redistribution, and general management of primary provincial mapping datasets. Our goal is to **make mapping products more available, accessible, accurate, and affordable**. We are your trusted source of spatial data.

Our state-of-the-art webstore, Altalis.com, is powered by AWS enabling reliable, fast and secure data deliveries. **Customers can explore, view, and acquire spatial data products both paid and open data with the click of a button**. We take pride in providing exceptional customer service and building long-term relationships with our clients. Our experienced customer service team is available to answer any questions you may have about finding the right data to meet your needs.